

www.deanguitars.com

Sandy & Mandy Bentley
Playboy Covergirls May 2000



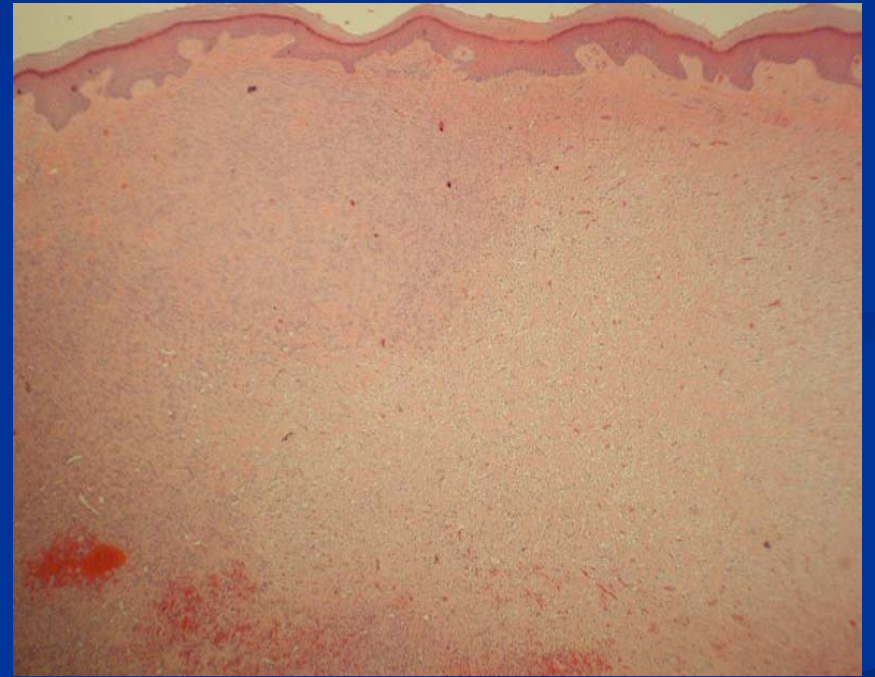
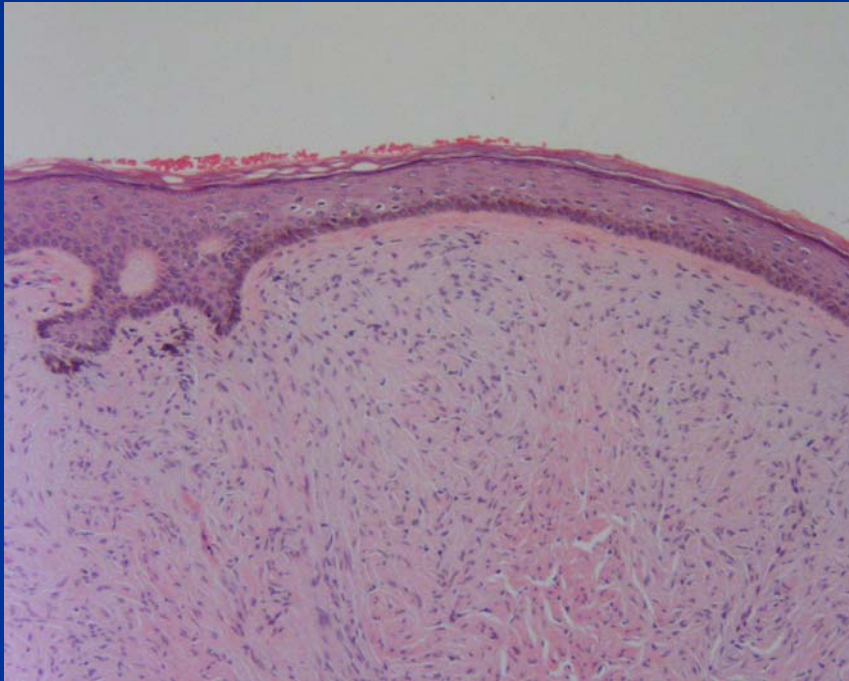
Dermatopathology Double Takes I

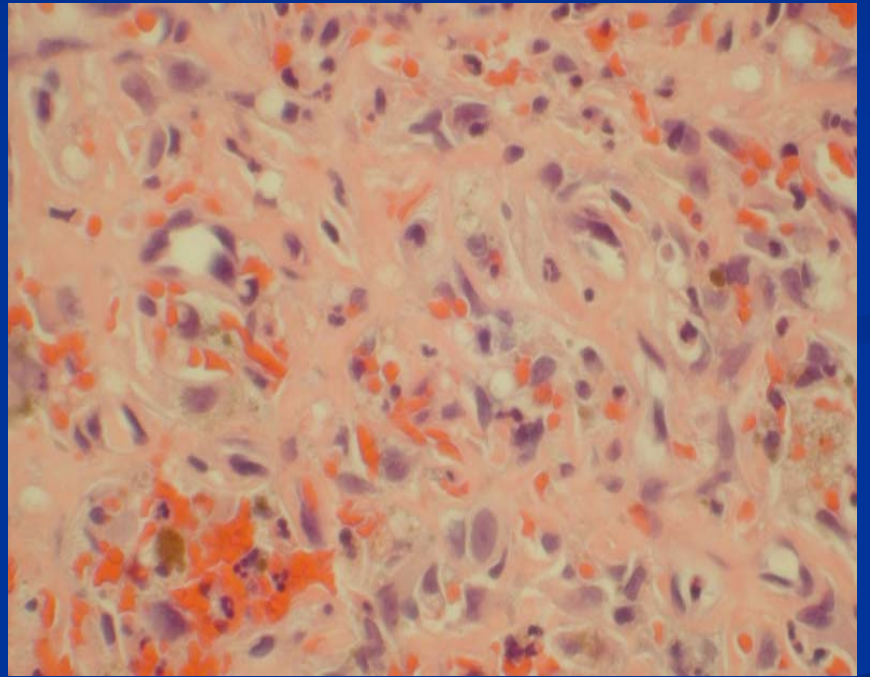
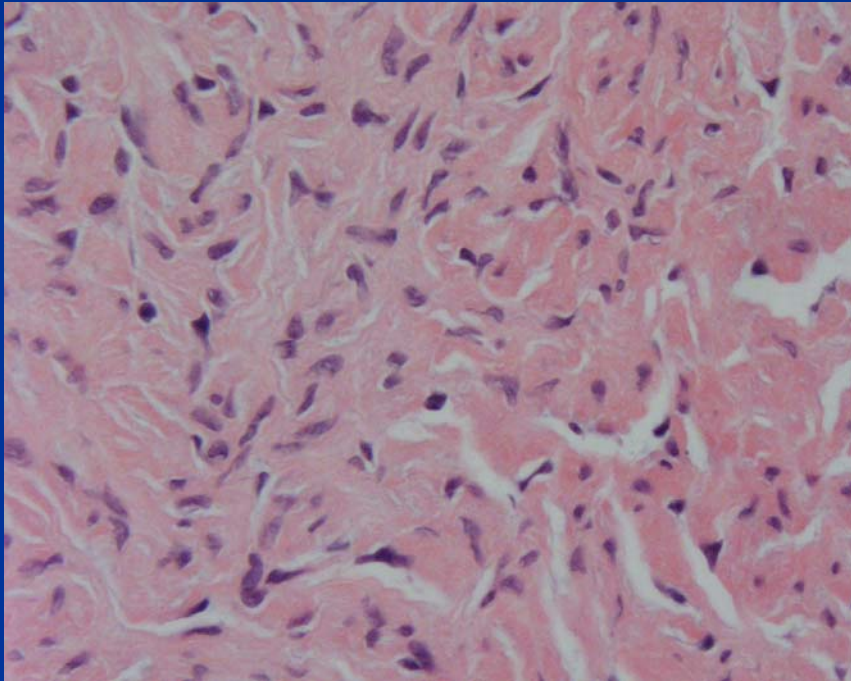
Paul K. Shitabata, M.D.

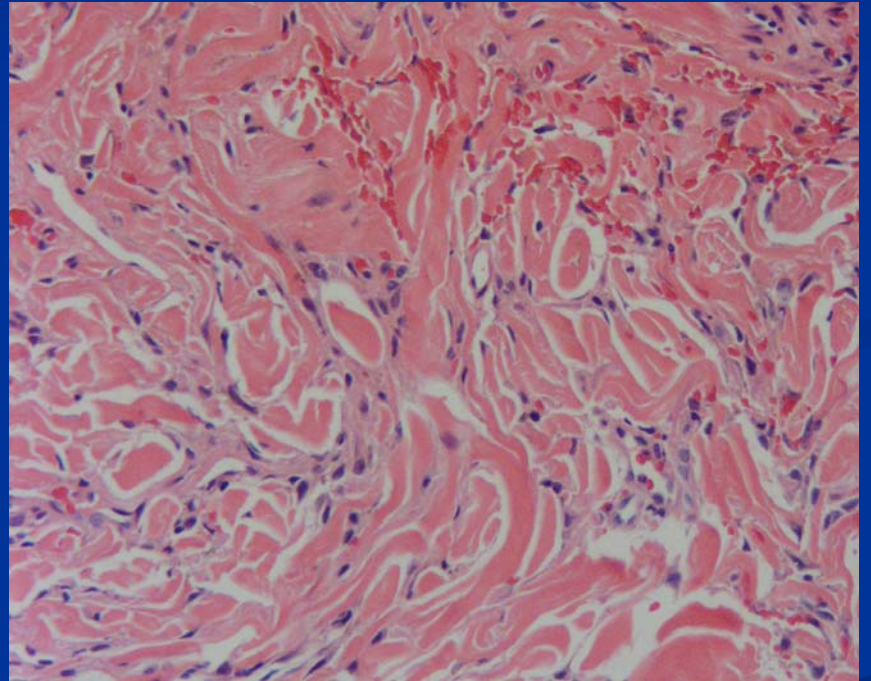
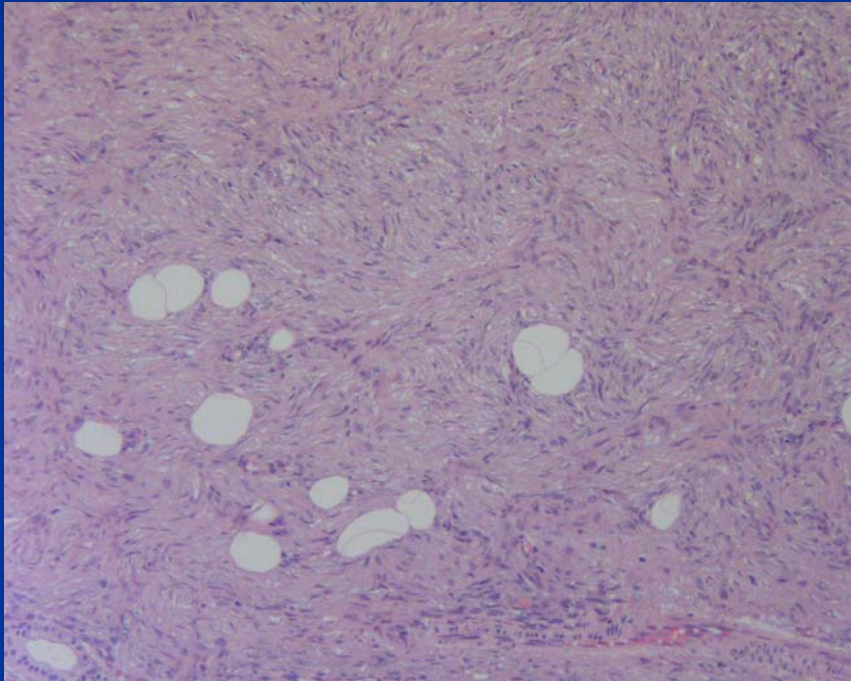
Dermatopathologist

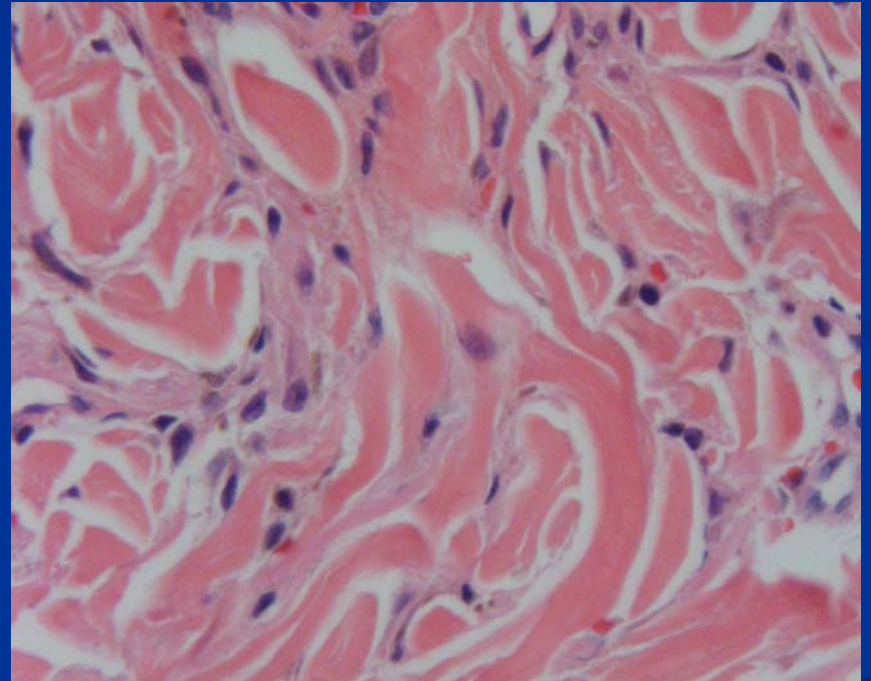
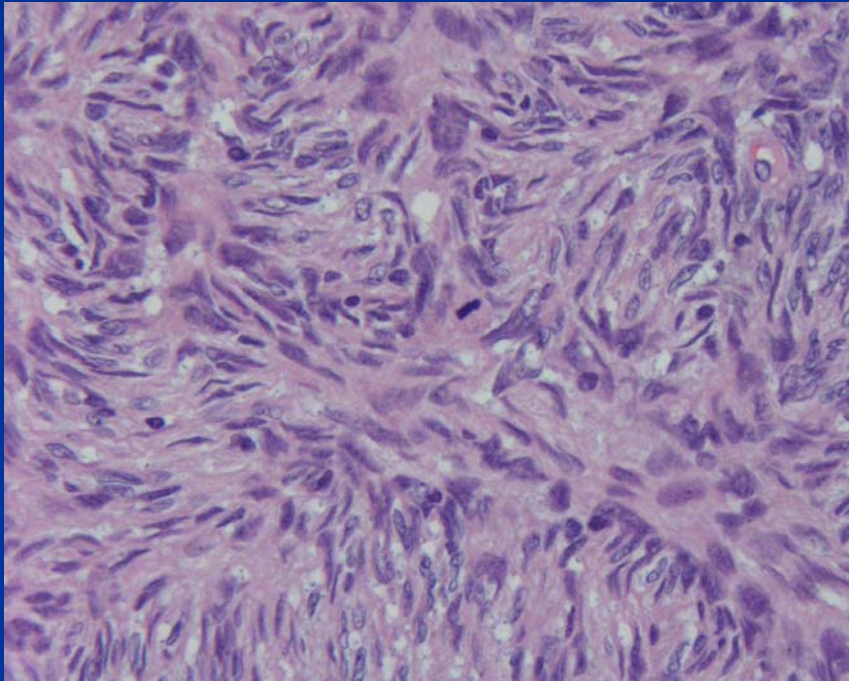
APMG

DF or DFSP?



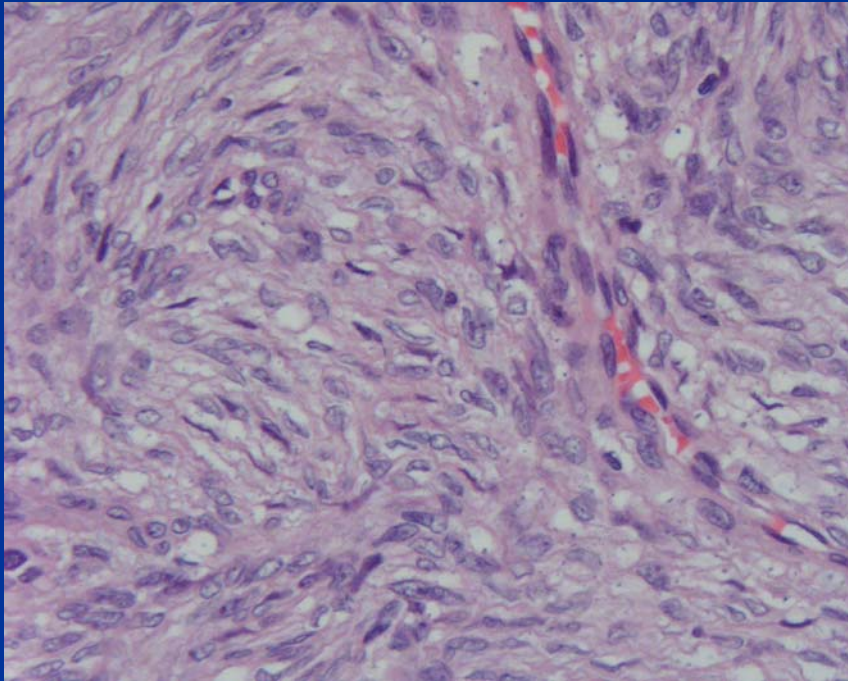




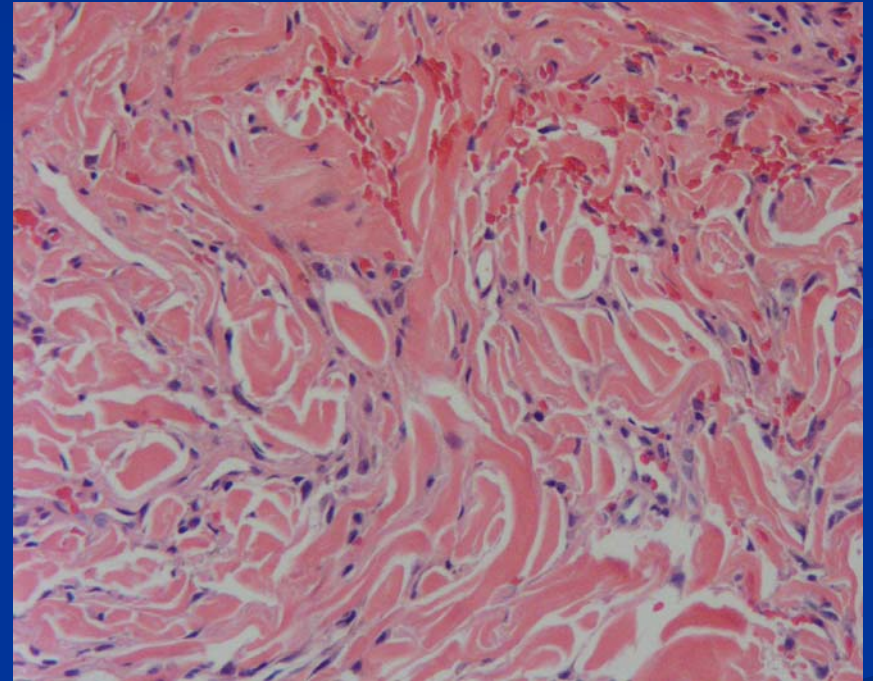


DF or DFSP?

DFSP



DF



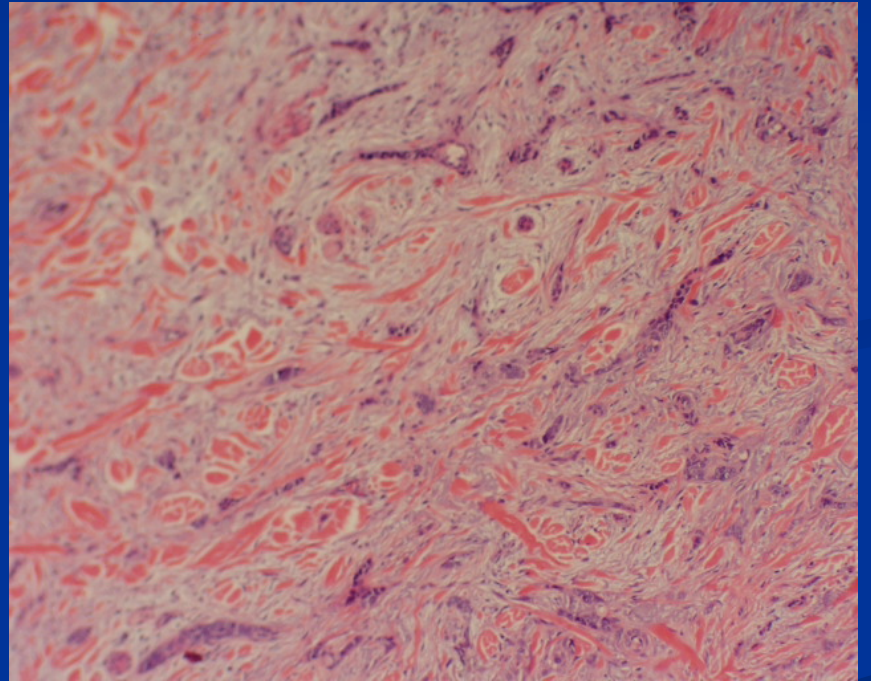
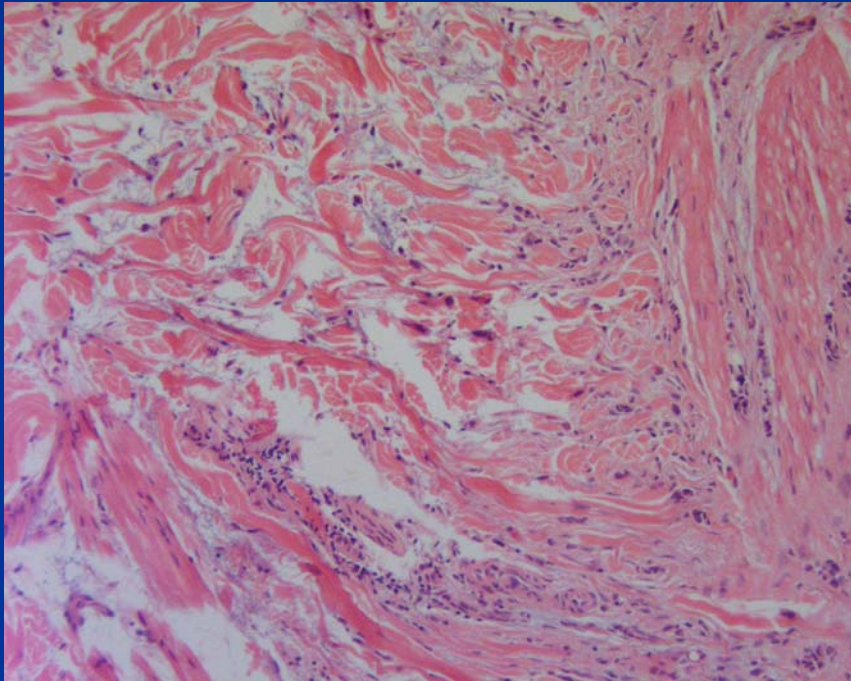
DFSP

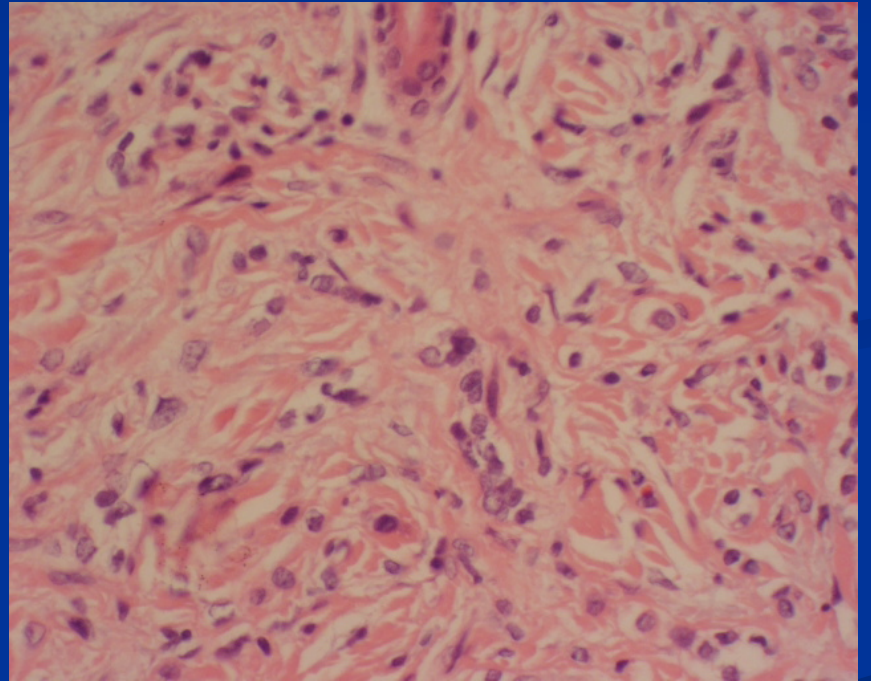
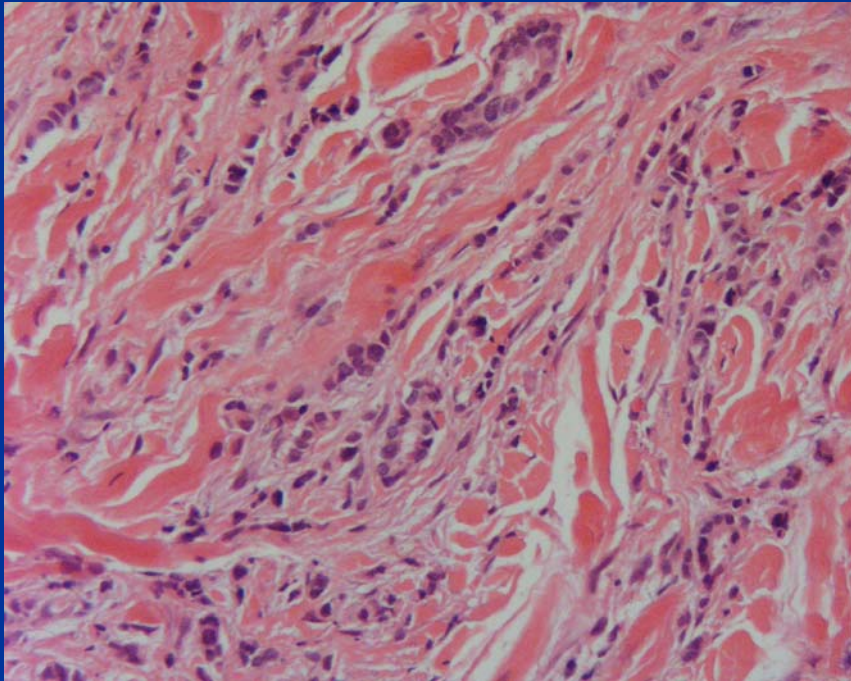
- Minimal epidermal change
- Uniform spindle cells
- Storiform architecture
- Usually absent giant cells
- Rarely melanin pigment
- CD34+, F13a-

DF

- Epidermal hyperplasia
- Heterogeneous cells
- Occasional storiform
- May have abundant Touton-type giant cells
- May have hemorrhage
- CD34-, F13a+

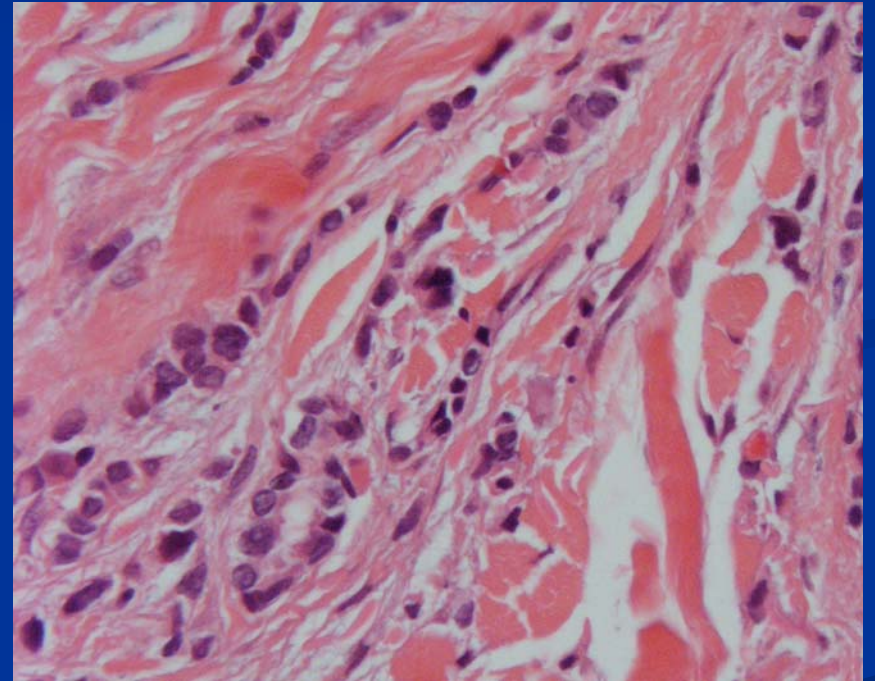
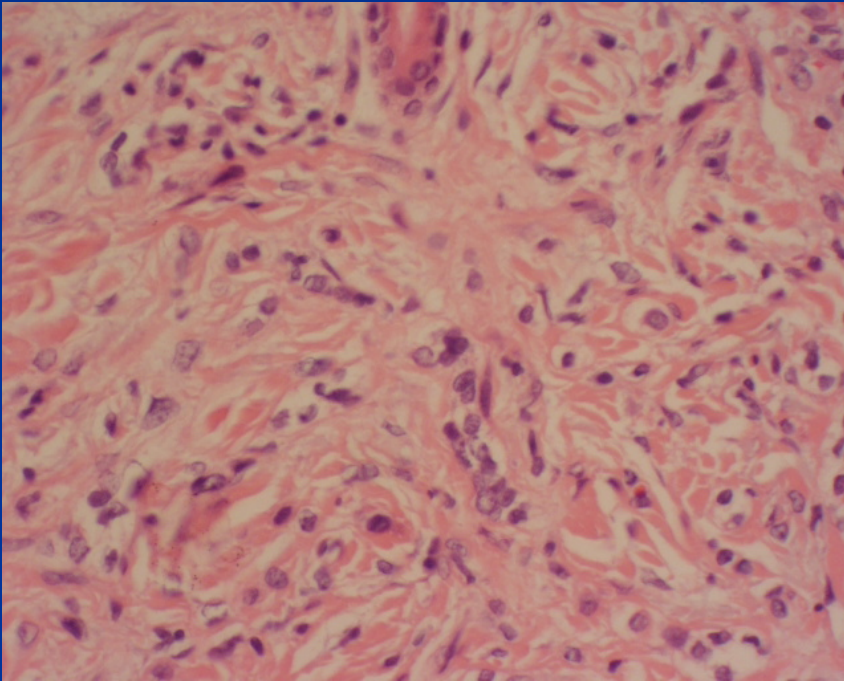
**Morpheaform BCC or Metastatic
Lobular CA of the breast?**





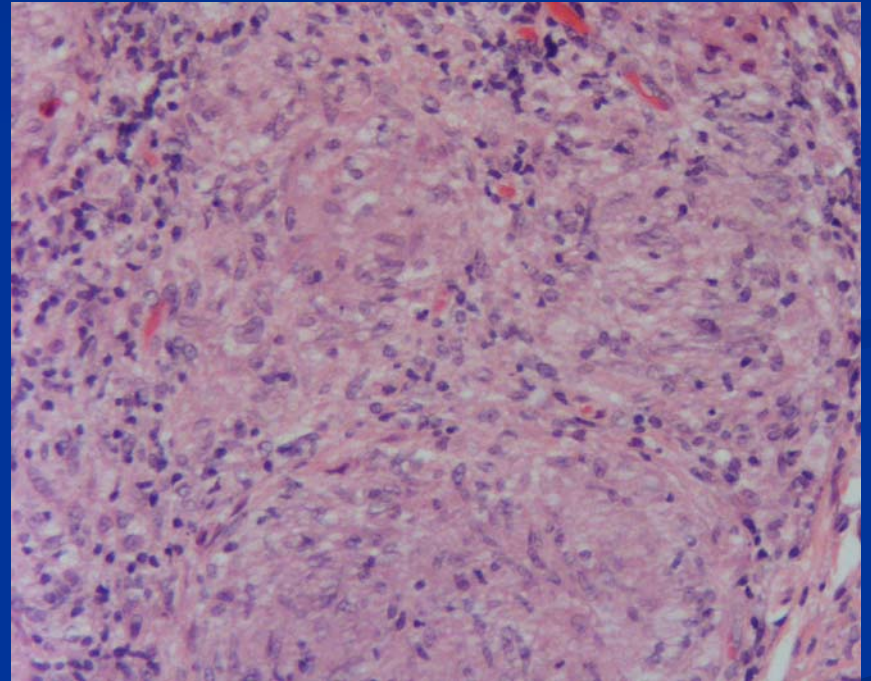
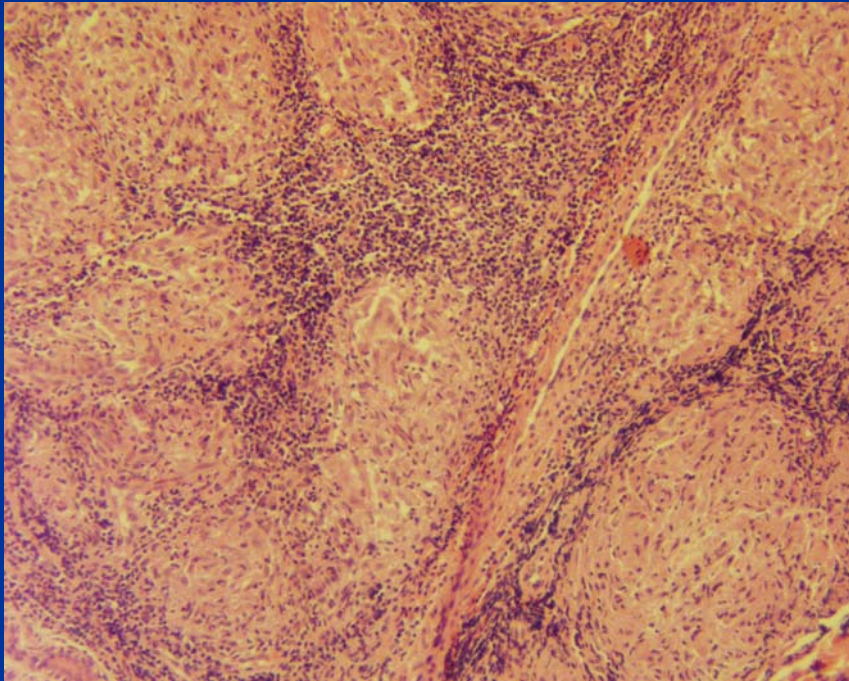
**Morpheaform BCC or Metastatic
Lobular CA of the breast?**

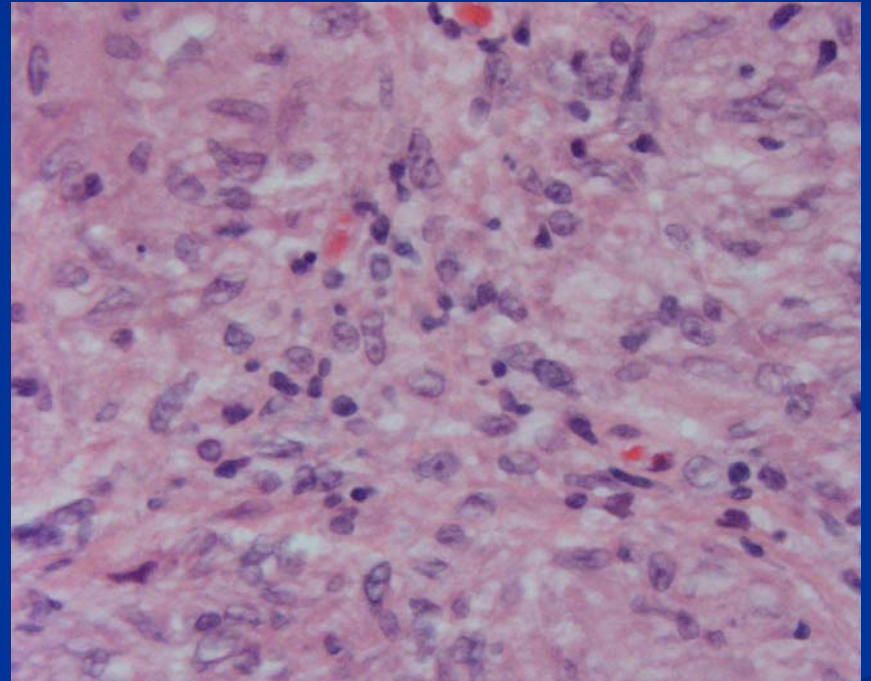
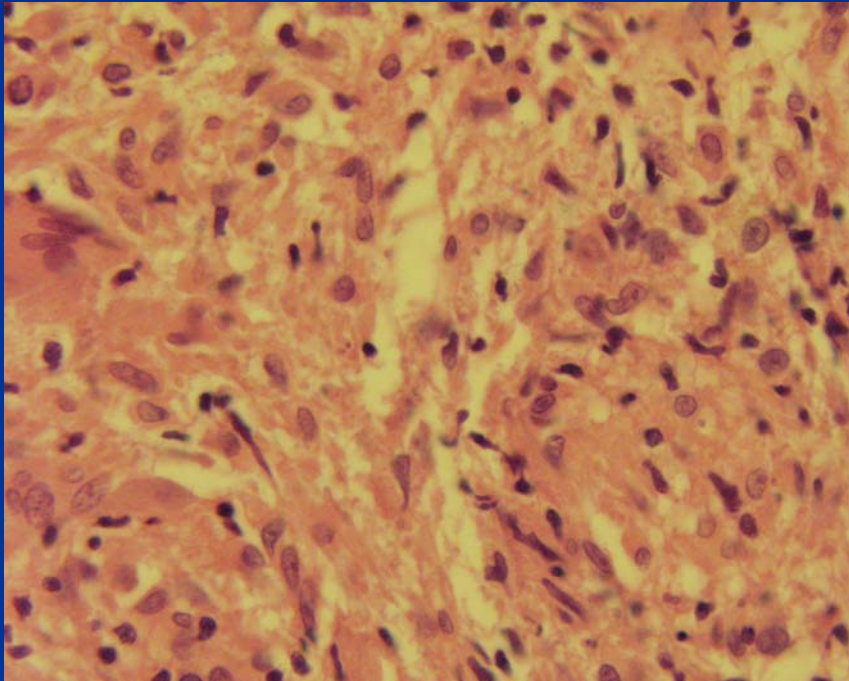
Morpheaform BCC or Metastatic Lobular CA of the breast?



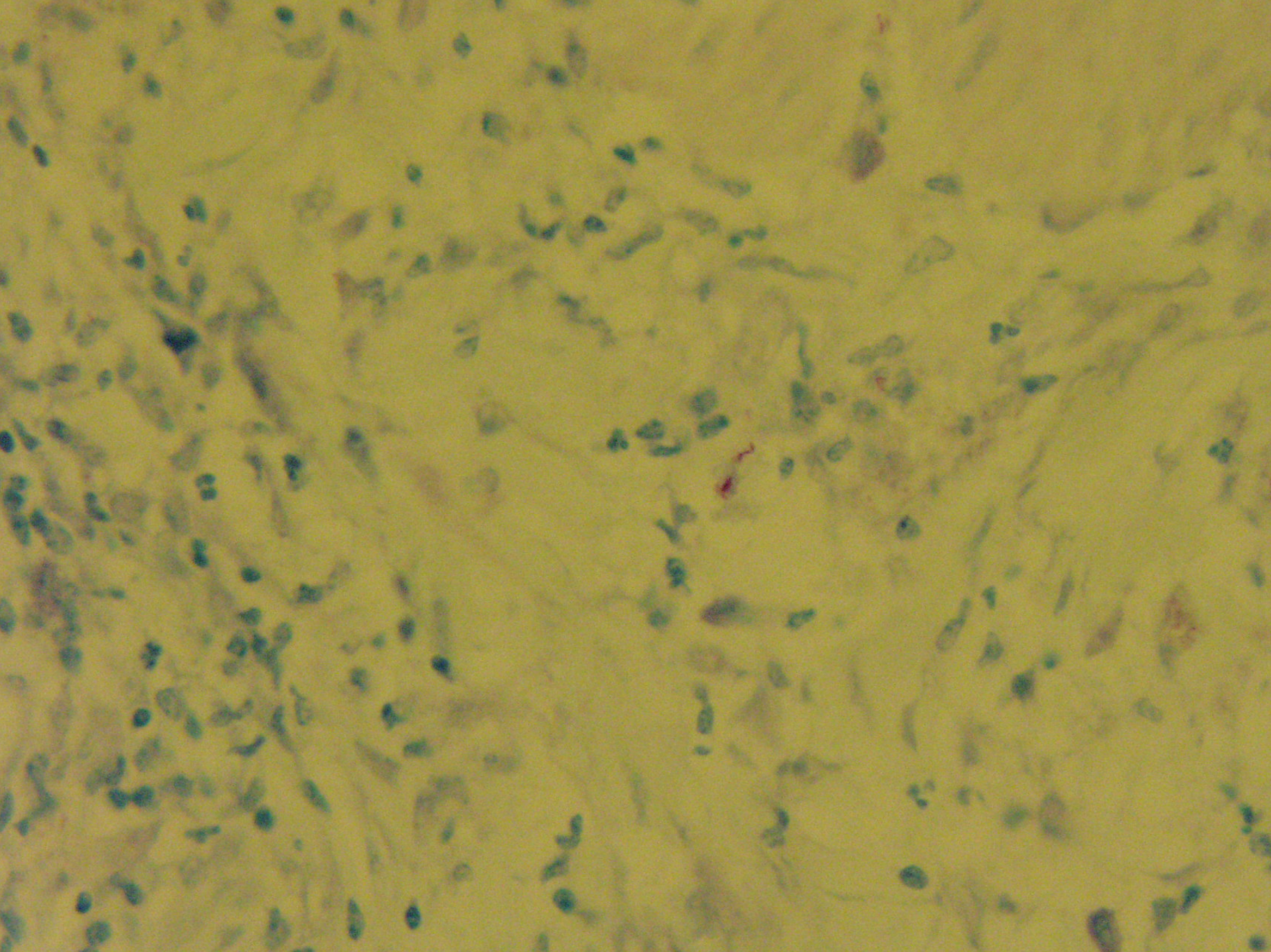
Feature	BCC	Breast CA
Epidermal attachment	Usually	May occur
Gland formation	Rare	May occur
Cell size	Small	Small
Squamous differentiation	May occur	Usually absent
BRST-1	Negative	Positive

Sarcoidosis or Tuberculoid Leprosy?

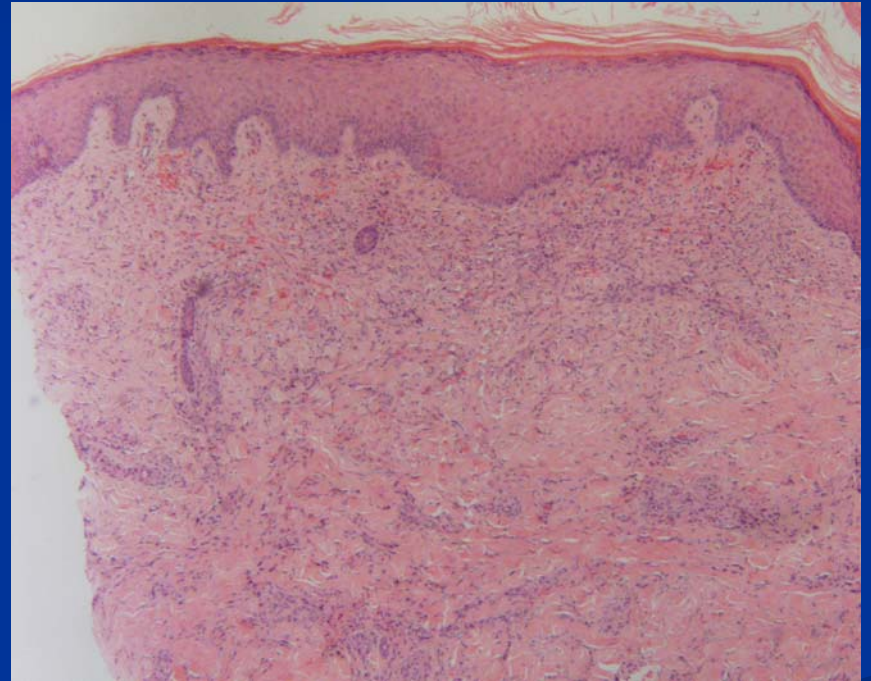
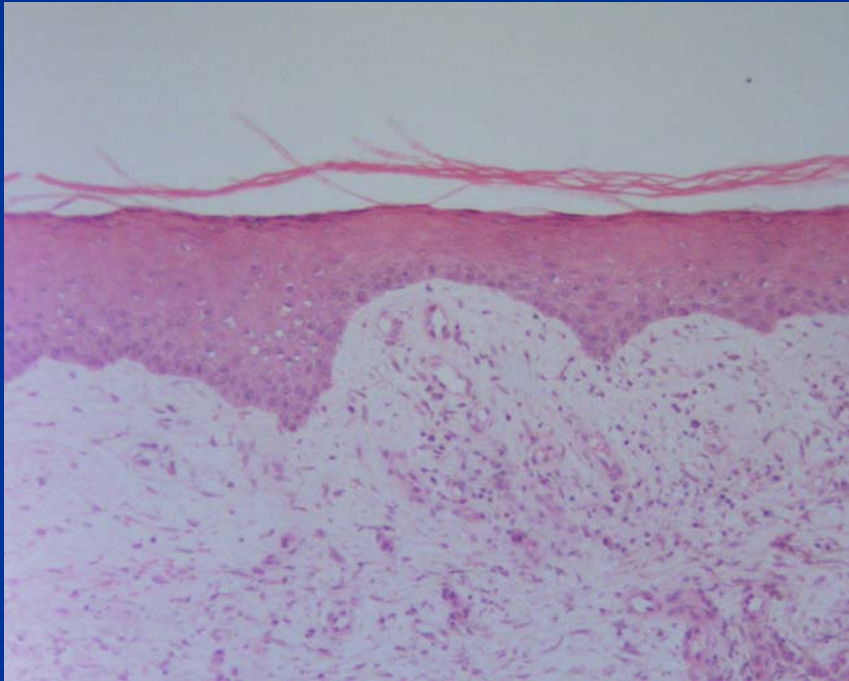


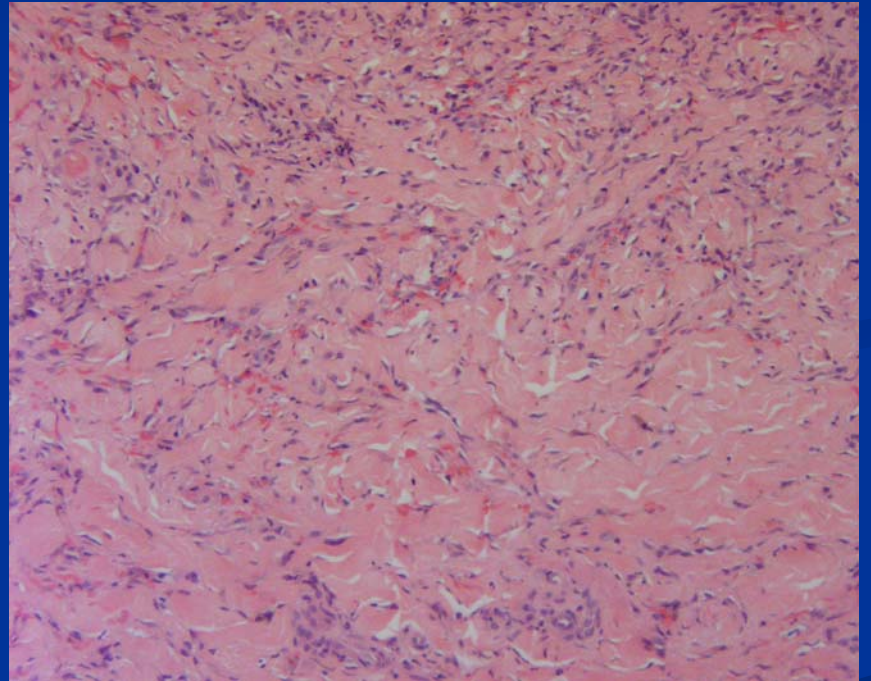
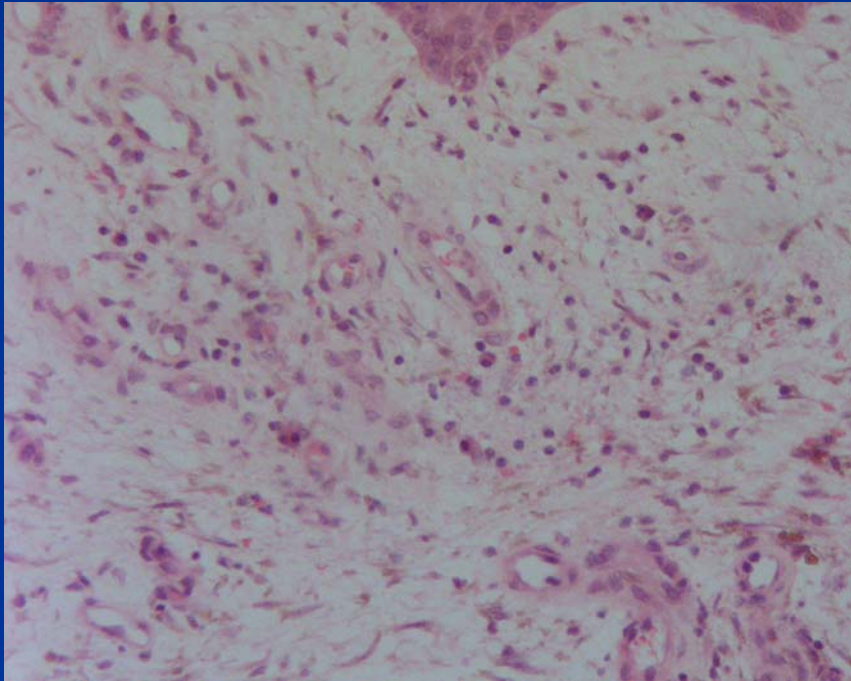


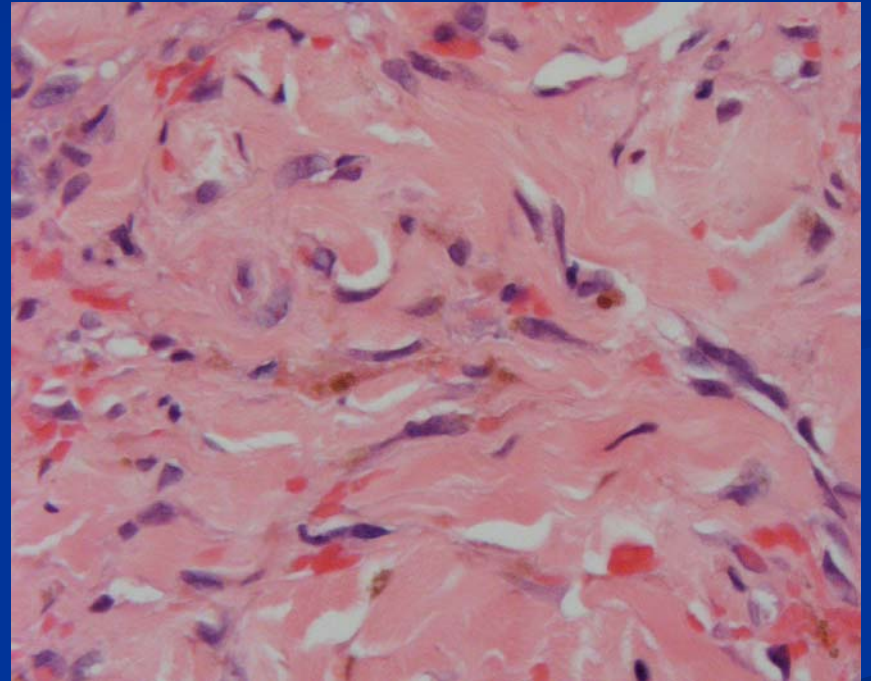
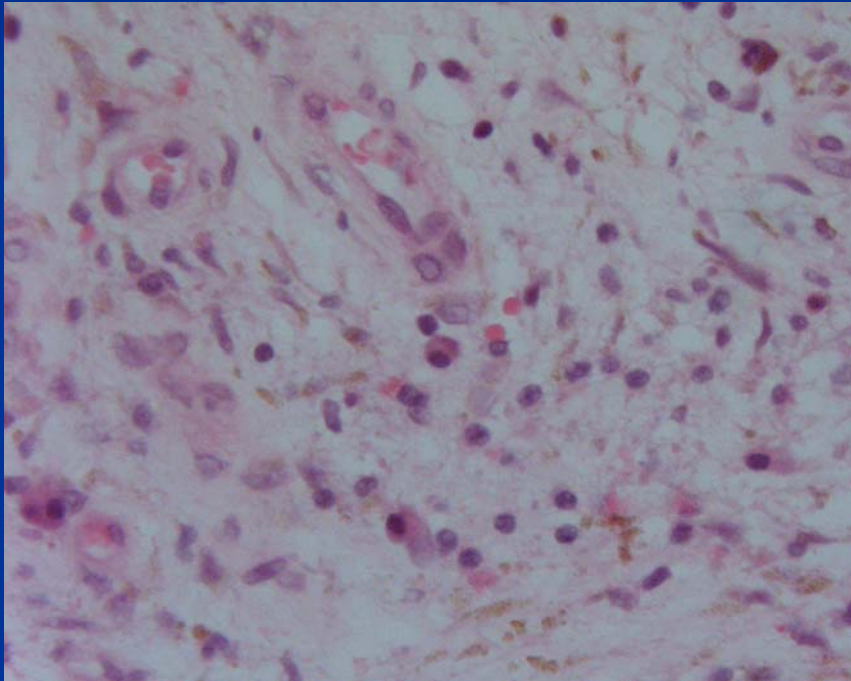
Feature	Sarcoidosis	Leprosy
Granulomas	Non-caseating	Non-caseating
Inflammation	Sparse	May be present
Giant cells	May be present	May be present
AFB/Fite	Negative	Positive



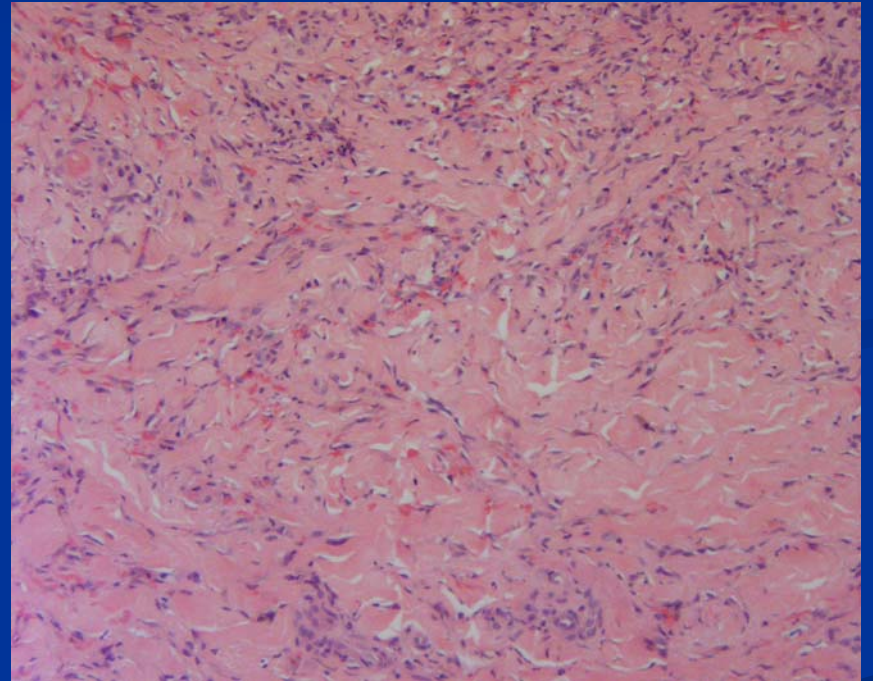
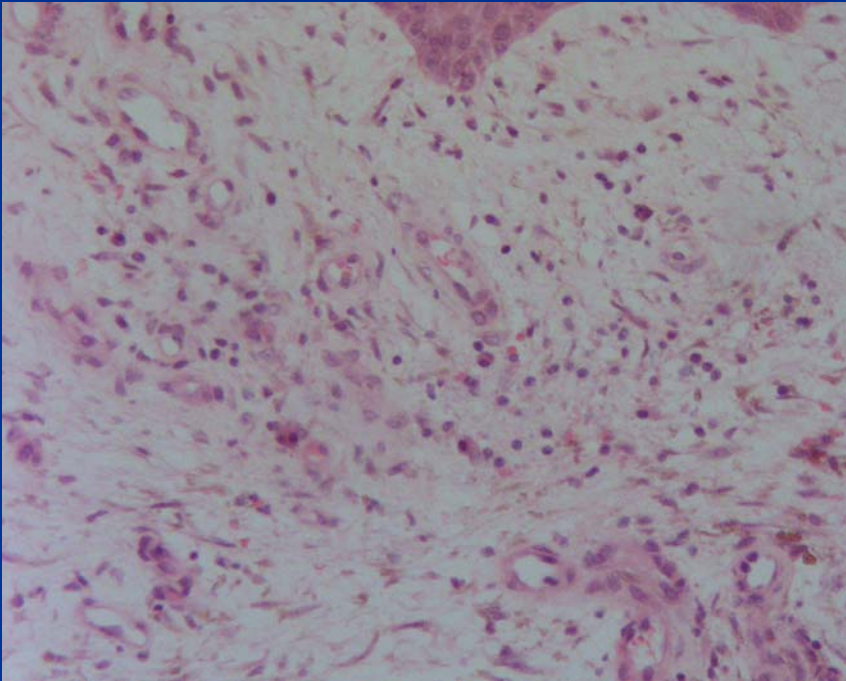
Kaposi's or Stasis Dermatitis?







Kaposi's or Stasis Dermatitis?

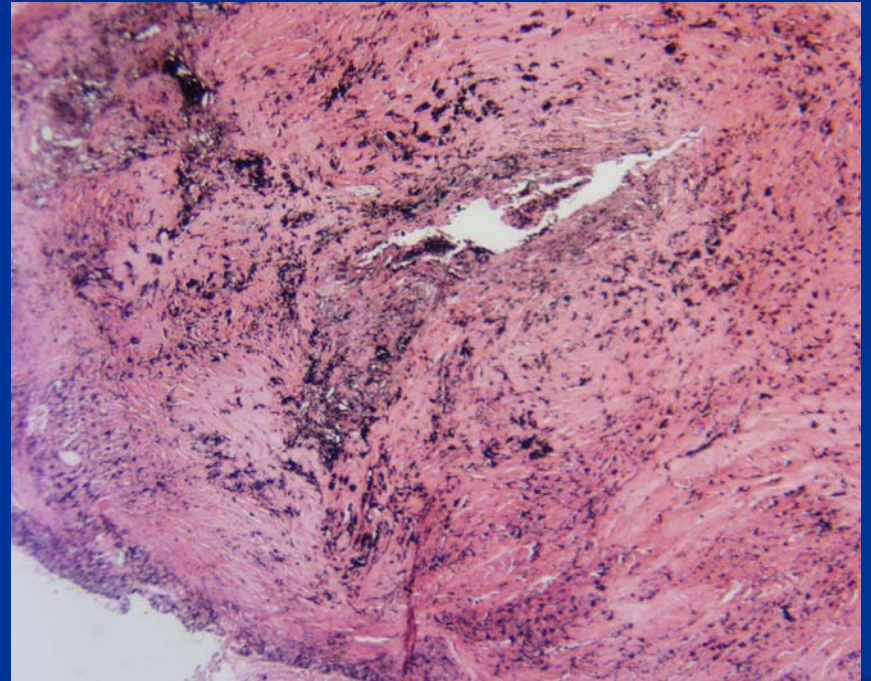
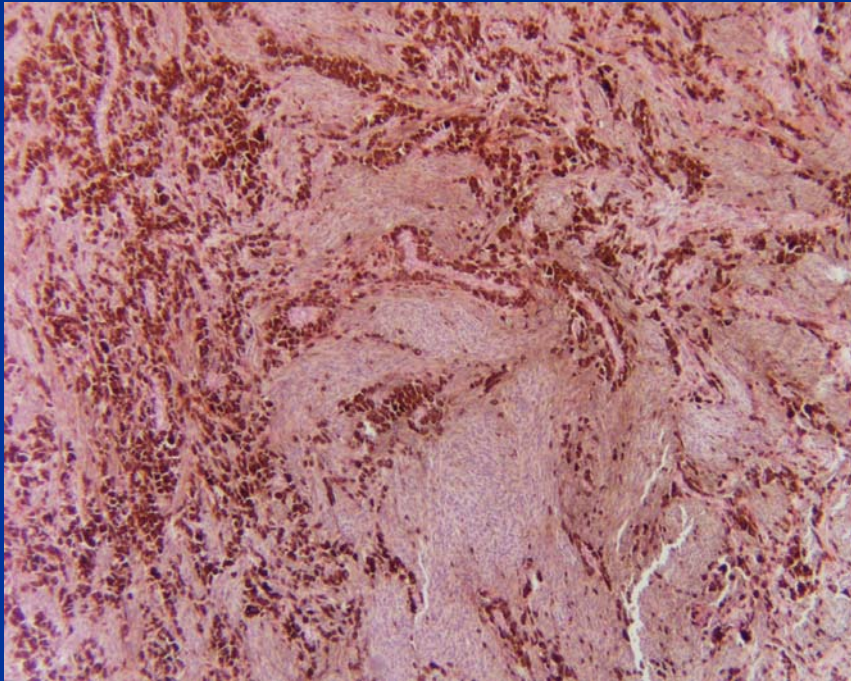


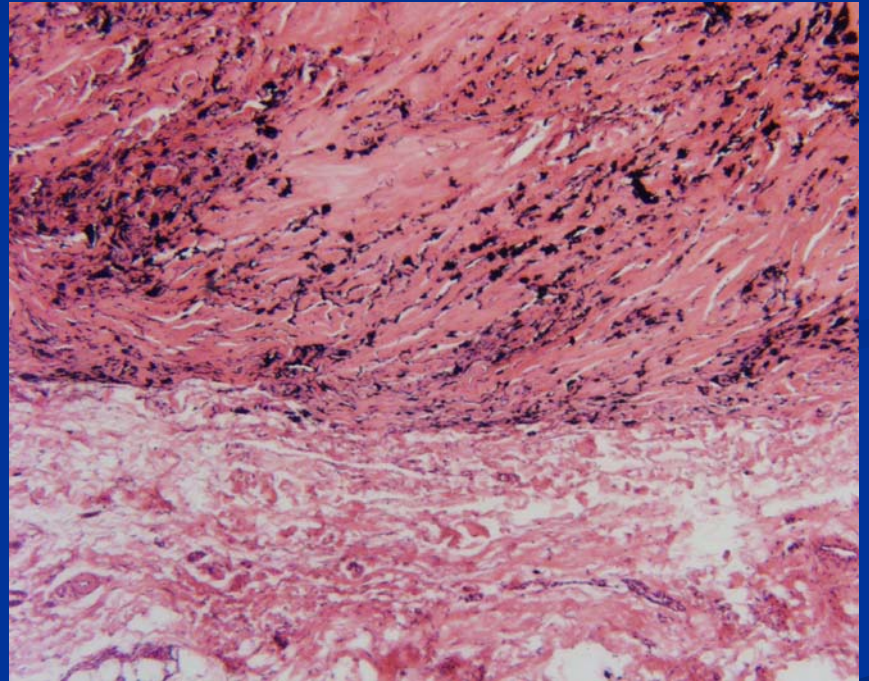
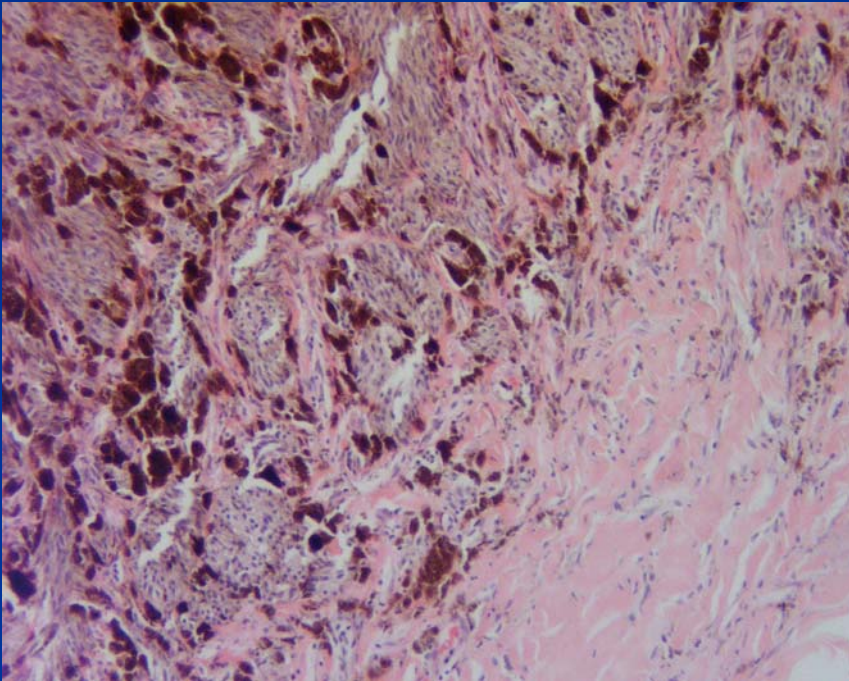
Feature	KS	Stasis
Architecture	Usually diffuse	Usually lobular
Spindle cells	Mild atypia	Usually no atypia
Extravasated rbcs	Present	Present
Plasma cells	Usually present	May be present depending upon site
Hyaline globules	Present	Usually absent
Promontory sign	May be present	Usually absent
HHV-8	Positive	Negative

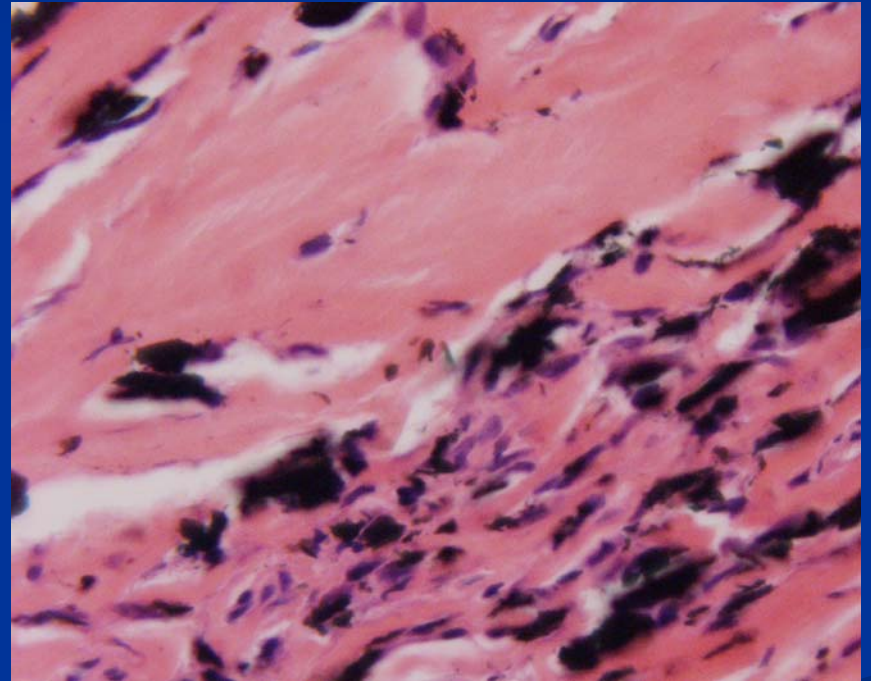
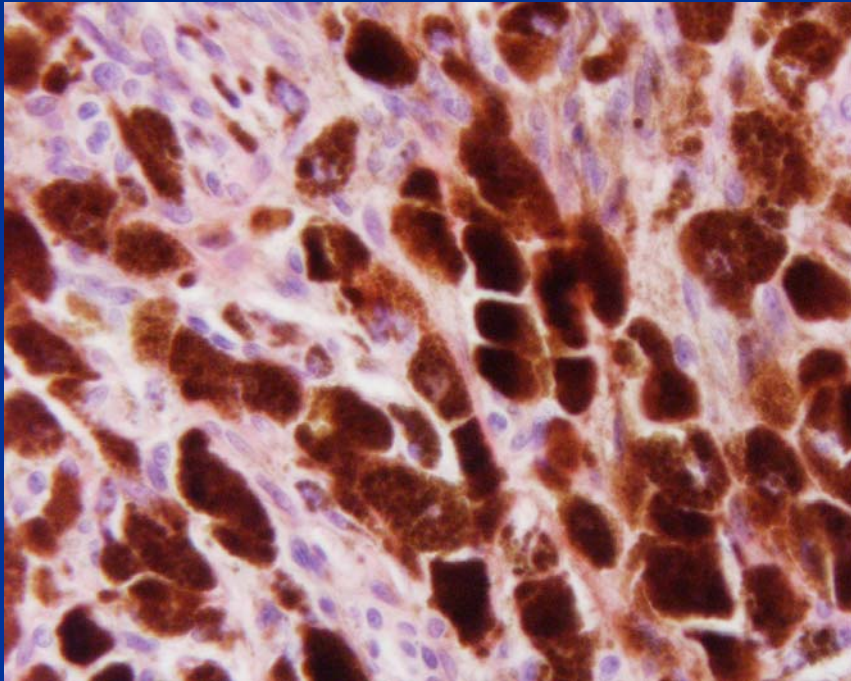
Beware Regressed KS!

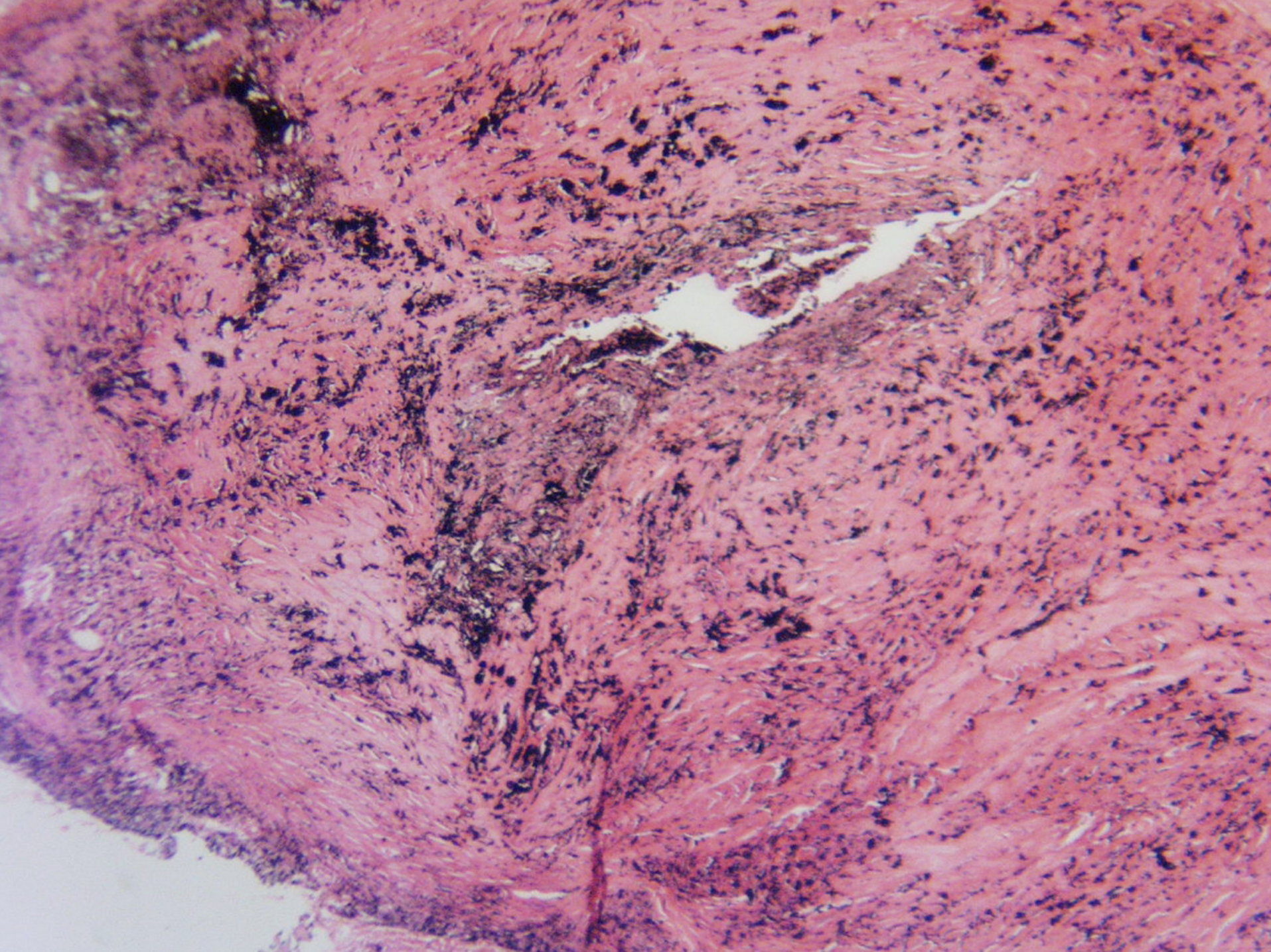
- Reduction of spindle cells
- Residual spindle cells around superficial and mid-capillaries
- SPVD with lymphocytes and hemosiderin laden macrophages
- Decrease in CD31
- No change in bcl-2 or c-kit

Tattoo or Blue Nevus?

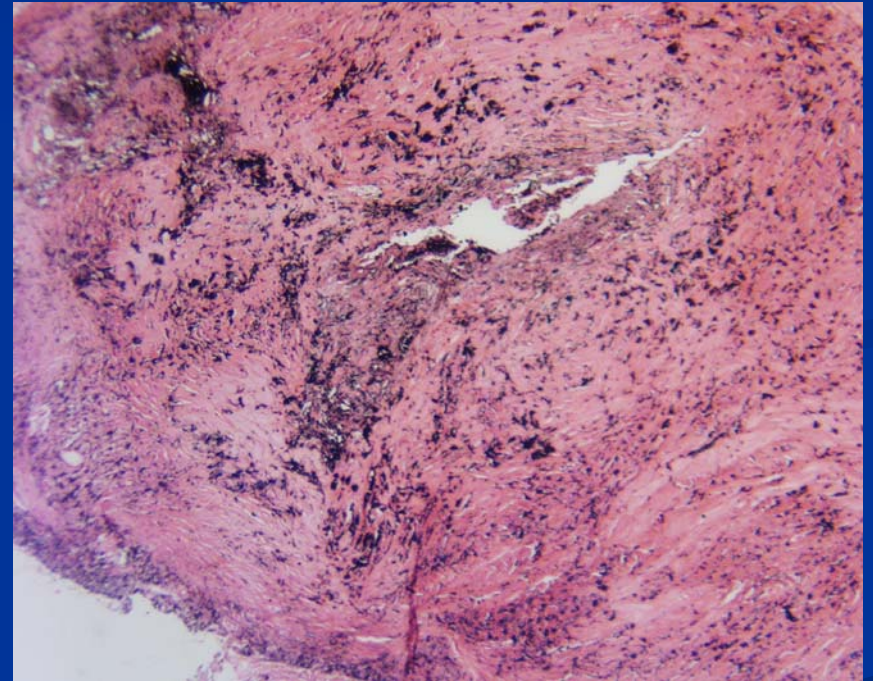
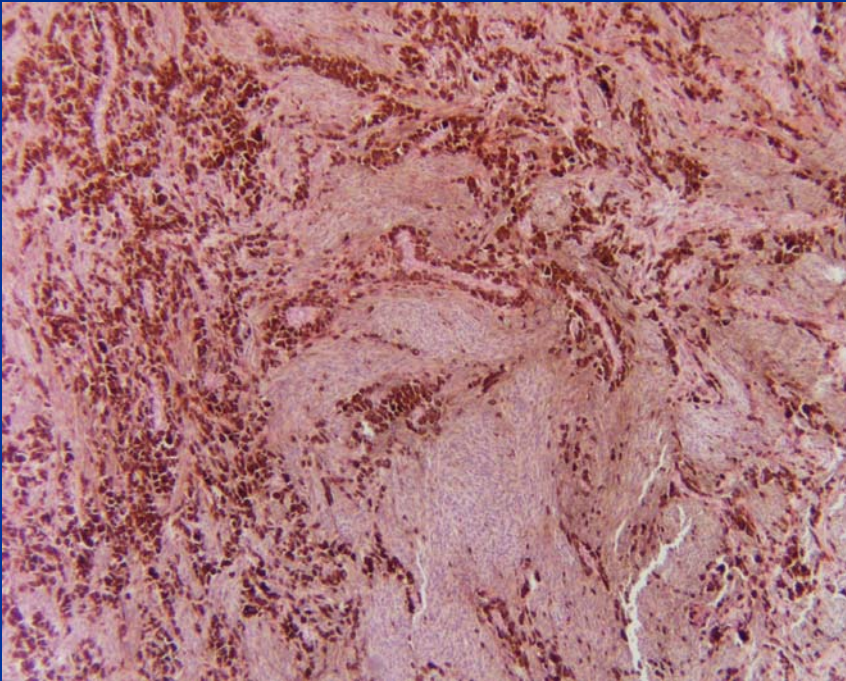








Tattoo or Blue Nevus?



Feature	Tattoo	Blue Nevus
Pigment	Coarse may be refractile	Coarse to fine, not refractile
Cell	Macrophages	Nests and theques of melanocytes
IPOX	S100-	S100+
Stain	Negative	Fontana-Masson

